

“Pop-ups”

- A pop-up is temporary traffic control measure to assess public response to potential changes in streets, parking or pedestrian travel ways
- Individual’s behavior is a crucial element in safety, testing public response provides better information than assumptions
- Both observation and opinion gathering contribute to building successful changes

“Pop-ups”

- Washington Street
- South Main St
- Mill St
- North Seminary St
- Washington Street
- So Main St

15 spaces on the west side above Academy St

10 spaces serpentine

sidewalk length - reduction from 52 to 40 feet

10' sidewalk refuge - reduction 77' to 33'; 34'

High contrast crosswalk near Academy

Crosswalk at 137 to 132 Wall St to “Cumby’s”

not yet completed

Washington St Pop-up

15 parking spaces





South Main St Pop-up 10 spaces serpentine



Mill St Pop-up pedestrian width reduction







May 5, 2019

Barre City, VT

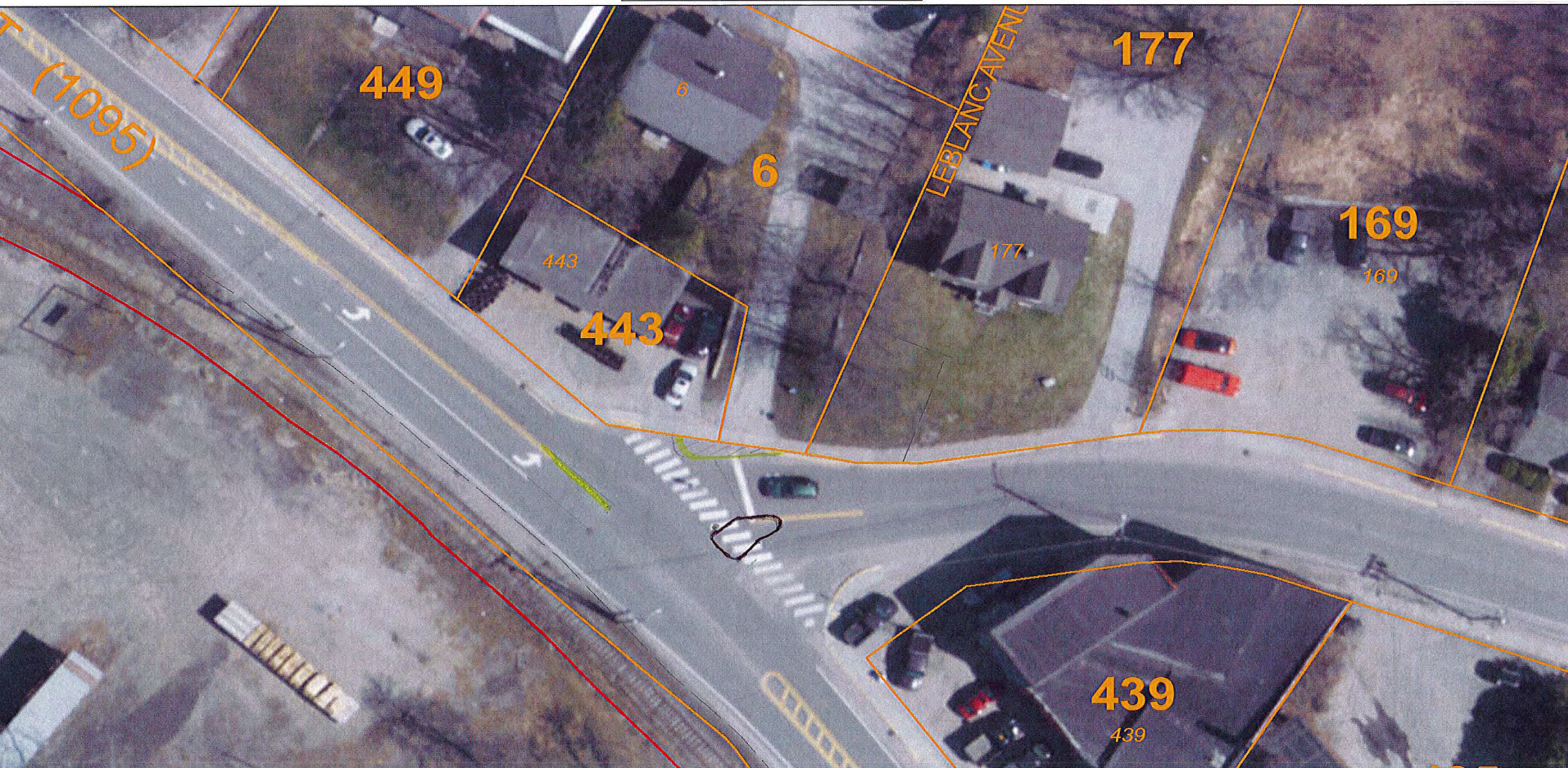
1 inch = 30 Feet



North Seminary Pop-Up



www.cai-tech.com



Information shown on this map is provided for planning and informational purposes only. The municipality and CAI Technologies are not responsible for any use for other purposes or misuse or misrepresentation of this map.

① Rest Zone, w/ [arrow pointing to a spot on the road]

North Seminary pop-up Pedestrian Refuge











Washington St pop-up - crosswalk





“Pop-ups”

- If you have an idea for a traffic control “pop-up” please send it to:
PWDirector@barrecity.org for consideration
- Links to survey found at Barre City webpages under heading DPW News

<https://www.barrecity.org/streets.html>